

Category 6 Solutions



Introduction.....	4.2
Cable.....	4.3
Patch Panels	4.4
Modules	4.6
Patch Cords.....	4.12
Outlets.....	4.16
Faceplates.....	4.18



Category 6 Solutions

Introduction

Speed, Performance and Reliability

ADC KRONE's Category 6 solutions are guaranteed to exceed Class E channel specifications as set down in International Standards. The RJ45 structured cabling solution consists of Category 6 component compliant patch panels, wall outlets and patch cords. When combined with ADC KRONE's cable, an end-to-end channel exists that maximises data throughput and provides headroom for all future technologies operating beyond one Gigabit.

HighBand® 25 is the perfect choice for high profile corporate customers, providing the platform needed for the most advanced networks. With unrivalled performance well beyond one Gigabit Ethernet, HighBand® 25 is the world's only high-density module that has a disconnect feature, making it the ideal product for a Patch-by-Exception solution.

TrueNet® Structured Cabling

09/08 • 400836IN

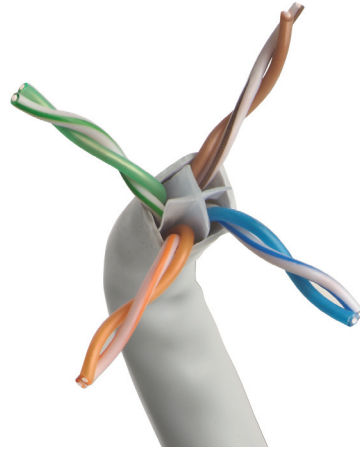


Category 6 Solutions

Cable

4-pair Copper UTP Cable

A crucial component of ADC KRONE's impedance matched TrueNet® structured cabling solution. This cable guarantees Category 6 performance ensuring maximum network speed, data throughput and efficiency.



Category 6 UTP Cable 4-pair

Ordering Information

Description	Quantity	Colour	Product No.
4-pair UTP Cable	305m Box	Grey	6499 1 030-01
4-pair UTP Cable	305m Box	Blue	6499 1 030-03

4-pair Copper F/UTP Cable

Foil over Unshielded Twisted Pair cable provides extra protection from external noise sources. This cable guarantees category 6 performance ensuring maximum network speed, data throughput and efficiency.



Category 6 F/UTP Cable 4-pair

Ordering Information

Description	Quantity	Colour	Product No.
4-pair Copper F/UTP Cable	305m Box	Grey	6462 1 082-01

Category 6 Solutions

Patch Panels

Fascia Patch Panels

These Patch Panels are available in 24 and 48-port configurations. All ports exceed Category 6 ISO/IEC11801:2002 and TIA/EIA-568-B.2-1 component compliance. Comes supplied with rear wire manager as standard accessory.



Category 6 Fascia Patch Panel

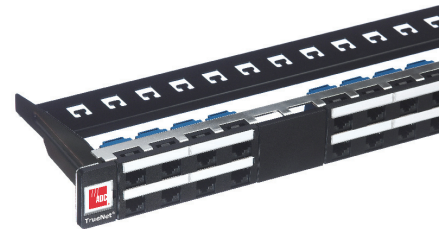
Ordering Information

Description	Quantity	Product No.
Category 6 Fascia Patchpanel 24 port 1U	Bag of 1	6653 1 679-24
Category 6 Fascia Patchpanel 48 port 2U	Bag of 1	6653 1 679-48

Keystone Patch Panel with S/FTP Outlets

These modular Category 6 panels utilise the high performing S/FTP Keystone RJ45.

Rear Cable Management included.



Shielded 24-port Patch Panel

Ordering Information

Description	Quantity	Colour	Product No.
Category 6, Shielded 24-port Patch Panel	Box of 1	Black	7022 1 055-24
Patch Panel, Unloaded KM8 16 Port	Box of 1	Black	7022 2 150-16
Patch Panel, Unloaded KM8 24 Port	Box of 1	Black	7022 2 150-24
Patch Panel, Unloaded KM8 32 Port	Box of 1	Black	7022 2 150-32

Category 6 Solutions

Patch Panels

Dynamic Angle Right/Left Patch Panel

This patch panel offers Category 6 component compliance and the ultimate flexibility by allowing the user to dynamically angle the ports either right or left. The 24 ports are in one row, side by side. ID tabs for colour coding are sold separately. RJ45 outlets utilise PCB technology.



24-port Dynamic Right/Left Patch Panel



Rear Cable Management Bar

Ordering Information

Description	Quantity	Colour	Product No.
24-port Dynamic Right/Left Patch Panel	Box of 1	Black	PP24AC6T
Rear Cable Management Bar	Box of 1	Black	ADCCMR-A
ID Tabs (Icons)	Bag of 25	Red	ADCICB03
ID Tabs (Icons)	Bag of 25	Green	ADCICB04
ID Tabs (Icons)	Bag of 25	Blue	ADCICB05
ID Tabs (Icons)	Bag of 25	Orange	ADCICB08
ID Tabs (Icons)	Bag of 25	Yellow	ADCICB09
ID Tabs (Icons)	Bag of 25	Purple	ADCICB10

Category 6 Solutions

Modules

HighBand® 25 Solution

ADC KRONE's HighBand® 25 cross connect solution allows for maximum network throughput beyond one Gigabit. It is the platform needed for the most advanced networks.

The HighBand® 25 solution consists of high performance disconnection modules, user friendly cable management and innovative anti-snag patch cords. It is the ideal cabling solution for companies that are conscious of efficiency, guaranteed performance and appealing aesthetics.

Modules can be either patched or jumpered and used in a Patch-by-Exception structured cabling solution. Patch-by-Exception (PBE) solutions offer material, installation and operational cost savings over traditional RJ45 products. In all newly installed PBE systems there are no patch cords or jumper cables visible to the front. The system is totally hard wired from network equipment to work area, providing a secure, reliable, high performance infrastructure from switch to work area, or PABX to telephone.

HighBand® 25 utilises the silver plated, world renowned LSA-PLUS® contact principle. This technology has become the industry standard in over 140 countries. The gas tight contacts ensure a reliable and long lasting connection. The frequent moves, adds and changes that occur in today's cabling systems can quickly degrade the quality of wire termination. ADC KRONE products maintain superior connectivity during hundreds of re-terminations and deliver the best electrical performance in the industry.

Features and Benefits

- Unrivalled maximum headroom above Category 6 standards
- 25-pair modules for voice and data applications (first 24 for data)
- The world's only 25-pair disconnect module providing unique Patch-by-Exception functionality and improved administration
- Modules can be jumpered or patched (or both)
- A test port provides "look-both-ways" testing capability without the removal of any wires; also allows simple circuit monitoring through use of a test cord
- Integrates easily with all of ADC KRONE's solutions
- Silver plated LSA-PLUS® contacts made from superior spring copper alloy
- Upper and lower shell mouldings made from high quality PBT plastic
- Available as individual components or in complete systems, consisting of unique disconnect modules, cable managers, covers, patch cords, mounting frames and label holders



HighBand® 25 Solution

Category 6 Solutions

Modules

HighBand® 25 Module Specifications

MECHANICAL

Wire Range for Solid and Stranded Copper Conductors:	0.4mm to 0.65mm (26 to 22 AWG)*
Wire Insulation Diameter Range (PE,PVC):	0.7mm to 1.4mm
Number of Wire Terminations:	≥200
Wire Insertion Force (0.5mm conductor dia):	6N
Wire Pull Out Force, Radial (0.5mm conductor dia):	≥5N
Wire Pull Out Force, Axial (0.5mm conductor dia):	≥35N
Number of Patching Cycles:	750

*A maximum of 2 equal diameter solid conductors only, of up to 0.5mm conductor diameter can be terminated per slot. Only 1 conductor of stranded wires per slot can be terminated. If any conductors >0.5mm diameter have been terminated, reversal to smaller conductors is no longer possible.

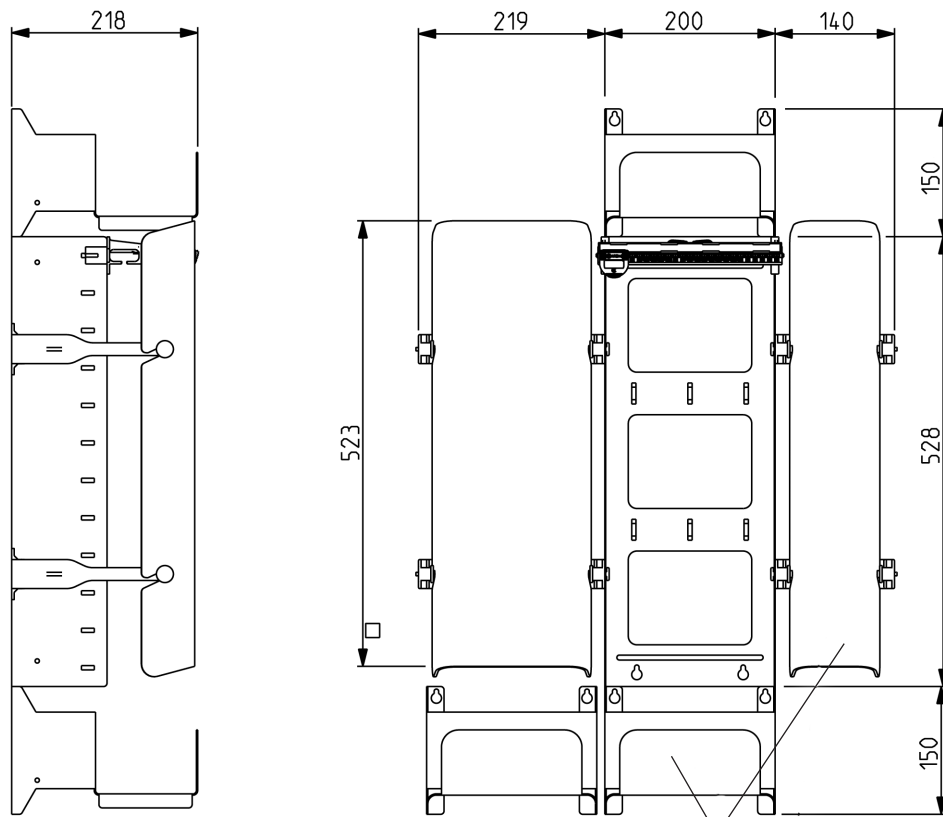
ELECTRICAL

Transmission, Performance and Reliability:	Exceeds ISO/IEC 11801 Class E AS/NZS 3080:2002 Class E TIA/EIA 568-B.2-1 Category 6
Voltage Rating:	150 VAC
Insulation Resistance:	≥500,000 MΩ at 500 VDC

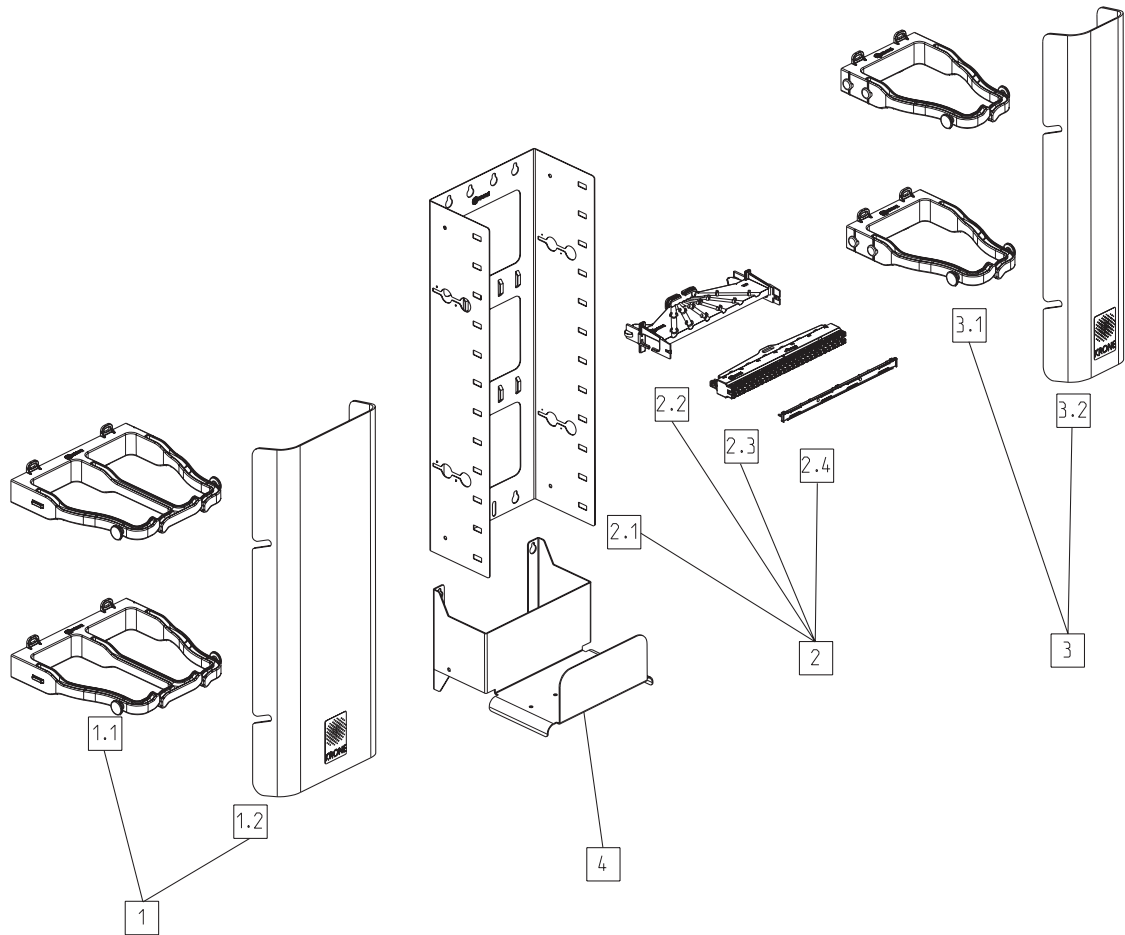
ENVIRONMENTAL AND SAFETY

Safety Compliance:	UL 1863
Flammability Rating of Plastic Housing:	UL 94 VO
Environment for Use:	Indoors or in dry enclosure rated IP54 or greater
Operating Temperature Range:	-40°C to +80°C
Maximum Relative Humidity:	≤93% non-condensing

Dimensions of an installed HighBand® 25 system with dual and single cable management on either side.



Optional cable trough, single management & covers



Key	
1	Dual Cable Management Kit 1.1 Dual Vertical Cable Manager (2) 1.2 Dual Cover
2	HighBand® 25 Module Kit 2.1 12 Way Backmount Frame 2.2 Rear Cable Manager (12) 2.3 HighBand® 25 Category 6 Module (12) 2.4 Label Holder Kit (12)
3	Single Cable Management Kit 3.1 Single Vertical Cable Manager (2) 3.2 Single Cover
4	Cable Trough

Category 6 Solutions

Modules

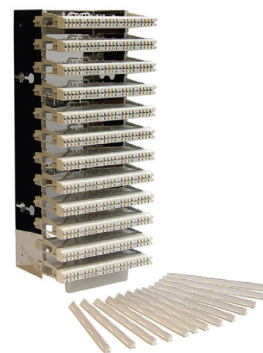
HighBand® 25 Cross-Connect System

Colour coded for ease of installation, the HighBand® 25 module allows for termination of 6, 4-pair (Category 6) UTP cables. The HighBand® 25 is the highest performing Category 6 module in the world with transmission performance headroom far exceeding all local and international standards.

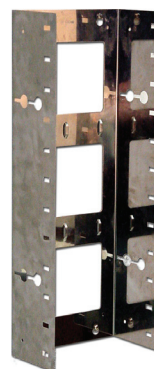
The rear cable manager provides cable management for incoming cables and makes installation easier. Incoming cables are held in place by built-in clips that direct the cable to the point of termination. Each cable is secured firmly preventing the need for additional cable or Velcro ties.

The label holder clips into position in three locations, providing a secure fit and allows patching and jumpering to take place whilst it is fitted.

The 12 way Backmount frame is made from high-grade stainless steel, providing strength and superior corrosion resistance. Extra depth has been provided to allow for Category 6 bend radius requirements. Velcro tie off points have been included to ensure tidy installation practices and ease of cable routing.



300-pair Basic System



12 way Backmount Frame



HighBand® 25 Category 6 Module



HighBand® 25 Label Holder

Ordering Information

Description	Product No.
300-pair Basic System Consists of (1) Backmount frame, (12) 25-pair Highband® 25 Category 6 modules including rear cable manager and (12) label holders.	6450 1 101-00
900-pair Basic System Consists of (3) Backmount frames, (36) 25-pair Highband® 25 Category 6 modules including rear cable manager and (36) label holders.	6450 1 102-00
HighBand® 25 Category 6 Module Kit Consists of (12) modules, (12) label holders and (12) rear cable managers.	6468 5 600-00
HighBand® 25 Category 3 Voice Module Kit Consists of (12) modules, (12) label holders and (12) rear cable managers.	6468 5 300-00
HighBand® 25 Label Holder Kit Consists of (12) label holders, (12) paper inserts and (12) protective windows.	6462 2 408-00
12 way Backmount Frame (1)	6450 2 155-00

Category 6 Solutions

Modules

Cable Management

The cable management rings control vertical cable management between frames, ensuring that cables do not interfere when adds, moves and changes occur. The dual cable manager is ideal for high density or heavily patched installations and provides a neat, clean finish to the HighBand® 25 system. The single cable manager is best suited to either the start or finish of the system.

Cable troughs mounted on the top and bottom of each frame ensure superior patch cord management and correct bend radius between frames.

TrueNet® Structured Cabling

4. Category 6 Solutions

09/08 • 400836IN



Dual Cover



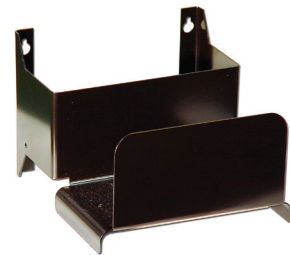
Single Cover



Dual Cable Management Rings



Single Cable Management Rings



Cable Trough

Ordering Information

Description	Product No.
300-pair Cable Management Kit Includes (2) dual cable management rings and (1) dual cover.	6450 1 103-00
900-pair Cable Management Kit Includes (6) dual cable management rings and (3) dual covers.	6450 1 104-00
Dual Cable Management Rings (2)	6450 2 156-02
Dual Cover (1)	6450 2 158-02
Single Cable Management Kit Includes (2) single cable management rings and (1) single cover.	6450 1 103-01
Single Cable Management Rings (2)	6450 2 156-01
Single Cover (1)	6450 2 158-01
Cable Trough (1)	6450 2 157-00

Category 6 Solutions Modules

19" Rack Installations

HighBand® 25 can also be used as a traditional cross connect inside a 19" rack. The recessed frame ensures that the modules sit flush with the front of the rack and other 19" equipment that may already be in place within the rack.

A rear cable manager is also available to assist when other cable management within the rack is not accessible.



Rear Cable Management Bar



HighBand® 25 100-pair Kit



HighBand® 25 200-pair Kit



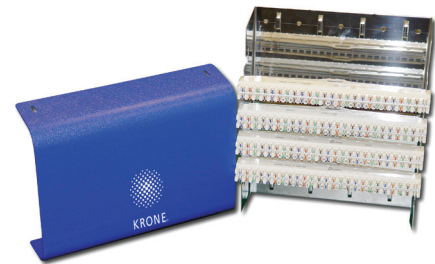
HighBand® 25 300-pair Kit

Ordering Information

Description	Dimensions	Product No.
HighBand® 25 100-pair Kit Consists of (4) Category 6 modules, (4) label holders and (1) 19" recessed frame.	2RU	6450 1 176-00
100-pair Recessed Frame (1)	2RU	6450 2 176-00
HighBand® 25 200-pair Kit Consists of (8) Category 6 modules, (8) label holders and (1) 19" recessed frame.	3RU	6450 1 177-00
200-pair Recessed Frame (1)	3RU	6450 2 177-00
HighBand® 25 300-pair Kit Consists of (12) Category 6 modules, (12) label holder kits and (1) 19" recessed frame.	4RU	6450 1 178-00
300-pair Recessed Frame (1)	4RU	6450 2 178-00
Rear Cable Management Bar		6450 1 210-00

Consolidation Point

For use in horizontal cabling as a high-density consolidation point, ideal for use inside a ceiling or false floor. The modules clip directly on to the specially designed metal Backmount frame. The plastic cover clips into place to protect the modules from dust and foreign particles.



Consolidation Point Kit

Ordering Information

Description	Product No.
Consolidation Point Kit Consists of (4) Category 6 modules, (4) label holders, (1) Backmount frame and (1) protective cover.	6450 1 105-01

Category 6 Solutions

Patch Cords

HighBand® 25 Patch Cords

The HighBand® 25 patch cords are Category 6 compliant and come in a number of alternate styles to suit the various applications. The 4-pair rear facing patch cord is ideally suited to the 300-pair and 900-pair systems.

The 1-pair patch cord is available for patching voice 1-pair to 1-pair or can also be utilised for single pair testing.

The front facing patch cords are ideal in rack mount installations or when patching is common place.

Ordering Information

Description	Quantity	Length	Colour	Product No.
4-pair to 4-pair Rear	Bag of 1	1.2m	Blue	6451 2 701C-10
4-pair to 4-pair Rear	Bag of 1	2.1m	Blue	6451 2 701C-20
4-pair to 4-pair Rear	Bag of 1	3.0m	Blue	6451 2 701C-30
4-pair to 4-pair Rear	Bag of 1	4.5m	Blue	6451 2 701C-40
4-pair to RJ45 Rear	Bag of 1	1.2m	Blue	6451 2 700C-10
4-pair to RJ45 Rear	Bag of 1	2.1m	Blue	6451 2 700C-20
4-pair to RJ45 Rear	Bag of 1	3.0m	Blue	6451 2 700C-30
4-pair to RJ45 Rear	Bag of 1	4.5m	Blue	6451 2 700C-40
1-pair to 1-pair Rear	Bag of 1	1.2m	White	6451 2 702-10
1-pair to 1-pair Rear	Bag of 1	2.1m	White	6451 2 702-20
1-pair to 1-pair Rear	Bag of 1	3.0m	White	6451 2 702-30
1-pair to 1-pair Rear	Bag of 1	4.5m	White	6451 2 702-40
4-pair to 4-pair Front	Bag of 1	1.2m	Blue	6451 2 703C-10
4-pair to 4-pair Front	Bag of 1	2.1m	Blue	6451 2 703C-20
4-pair to 4-pair Front	Bag of 1	3.0m	Blue	6451 2 703C-30
4-pair to 4-pair Front	Bag of 1	4.5m	Blue	6451 2 703C-40
4-pair to RJ45 Front	Bag of 1	1.2m	Blue	6451 2 704C-10
4-pair to RJ45 Front	Bag of 1	2.1m	Blue	6451 2 704C-20
4-pair to RJ45 Front	Bag of 1	3.0m	Blue	6451 2 704C-30
4-pair to RJ45 Front	Bag of 1	4.5m	Blue	6451 2 704C-40



1-pair Rear Facing



4-pair Front Facing



4-pair Rear Facing

Category 6 Solutions

Patch Cords

RJ45 to RJ45 Patch Cord

For patching between two RJ45 outlets in a Category 6 network. Each RJ45 connector has a latch protector.



Category 6 RJ45 Patch Cord

Ordering Information

Description	Quantity	Length	Colour	Product No.
TrueNet® Category 6 Patch Cord-Moulded Boot	Bag of 2	1.2m	Blue	6451 5 939-10B
TrueNet® Category 6 Patch Cord-Moulded Boot	Bag of 2	2.1m	Blue	6451 5 939-20B
TrueNet® Category 6 Patch Cord-Moulded Boot	Bag of 2	3.0m	Blue	6451 5 939-30B
TrueNet® Category 6 Patch Cord-Moulded Boot	Bag of 2	4.5m	Blue	6451 5 939-40B
TrueNet® Category 6 Patch Cord-Moulded Boot	Bag of 2	7.5m	Blue	6451 5 939-70B
TrueNet® Category 6 Patch Cord-Moulded Boot	Bag of 2	10.0m	Blue	6451 5 939-00B
TrueNet® Category 6 Patch Cord-Moulded Boot	Bag of 2	15.0m	Blue	6451 5 939-01B
TrueNet® Category 6 Patch Cord-Moulded Boot	Bag of 2	1.2m	Green	6451 5 992-10B
TrueNet® Category 6 Patch Cord-Moulded Boot	Bag of 2	2.1m	Green	6451 5 992-20B
TrueNet® Category 6 Patch Cord-Moulded Boot	Bag of 2	3.0m	Green	6451 5 992-30B
TrueNet® Category 6 Patch Cord-Moulded Boot	Bag of 2	4.5m	Green	6451 5 992-40B
TrueNet® Category 6 Patch Cord-Moulded Boot	Bag of 2	7.5m	Green	6451 5 992-70B
TrueNet® Category 6 Patch Cord-Moulded Boot	Bag of 2	10.0m	Green	6451 5 992-00B
TrueNet® Category 6 Patch Cord-Moulded Boot	Bag of 2	15.0m	Green	6451 5 992-01B
TrueNet® Category 6 Patch Cord-Moulded Boot	Bag of 2	1.2m	Red	6451 5 990-10B
TrueNet® Category 6 Patch Cord-Moulded Boot	Bag of 2	2.1m	Red	6451 5 990-20B
TrueNet® Category 6 Patch Cord-Moulded Boot	Bag of 2	3.0m	Red	6451 5 990-30B
TrueNet® Category 6 Patch Cord-Moulded Boot	Bag of 2	4.5m	Red	6451 5 990-40B
TrueNet® Category 6 Patch Cord-Moulded Boot	Bag of 2	7.5m	Red	6451 5 990-70B
TrueNet® Category 6 Patch Cord-Moulded Boot	Bag of 2	10.0m	Red	6451 5 990-00B
TrueNet® Category 6 Patch Cord-Moulded Boot	Bag of 2	15.0m	Red	6451 5 990-01B
TrueNet® Category 6 Patch Cord-Moulded Boot	Bag of 2	1.2m	Yellow	6451 5 993-10B
TrueNet® Category 6 Patch Cord-Moulded Boot	Bag of 2	2.1m	Yellow	6451 5 993-20B
TrueNet® Category 6 Patch Cord-Moulded Boot	Bag of 2	3.0m	Yellow	6451 5 993-30B
TrueNet® Category 6 Patch Cord-Moulded Boot	Bag of 2	4.5m	Yellow	6451 5 993-40B
TrueNet® Category 6 Patch Cord-Moulded Boot	Bag of 2	7.5m	Yellow	6451 5 993-70B
TrueNet® Category 6 Patch Cord-Moulded Boot	Bag of 2	10.0m	Yellow	6451 5 993-00B
TrueNet® Category 6 Patch Cord-Moulded Boot	Bag of 2	15.0m	Yellow	6451 5 993-01B

RJ45 to RJ45 Patch Cord (cont'd) on next page

Category 6 Solutions

Patch Cords

RJ45 to RJ45 Patch Cord

TrueNet® Structured Cabling

4. Category 6 Solutions

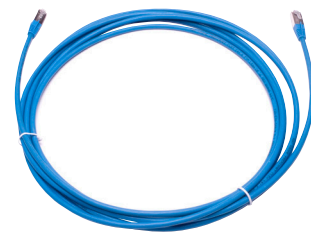
09/08 • 400836IN

Ordering Information

Description	Quantity	Length	Colour	Product No.
TrueNet® Category 6 Patch Cord-Moulded Boot	Bag of 2	1.2m	White	6451 5 998-10B
TrueNet® Category 6 Patch Cord-Moulded Boot	Bag of 2	2.1m	White	6451 5 998-20B
TrueNet® Category 6 Patch Cord-Moulded Boot	Bag of 2	3.0m	White	6451 5 998-30B
TrueNet® Category 6 Patch Cord-Moulded Boot	Bag of 2	4.5m	White	6451 5 998-40B
TrueNet® Category 6 Patch Cord-Moulded Boot	Bag of 2	7.5m	White	6451 5 998-70B
TrueNet® Category 6 Patch Cord-Moulded Boot	Bag of 2	10.0m	White	6451 5 998-00B
TrueNet® Category 6 Patch Cord-Moulded Boot	Bag of 2	15.0m	White	6451 5 998-01B
TrueNet® Category 6 Patch Cord-Moulded Boot	Bag of 2	1.2m	Grey	6451 5 994-10B
TrueNet® Category 6 Patch Cord-Moulded Boot	Bag of 2	2.1m	Grey	6451 5 994-20B
TrueNet® Category 6 Patch Cord-Moulded Boot	Bag of 2	3.0m	Grey	6451 5 994-30B
TrueNet® Category 6 Patch Cord-Moulded Boot	Bag of 2	4.5m	Grey	6451 5 994-40B
TrueNet® Category 6 Patch Cord-Moulded Boot	Bag of 2	7.5m	Grey	6451 5 994-70B
TrueNet® Category 6 Patch Cord-Moulded Boot	Bag of 2	10.0m	Grey	6451 5 994-00B
TrueNet® Category 6 Patch Cord-Moulded Boot	Bag of 2	15.0m	Grey	6451 5 994-01B
TrueNet® Category 6 Patch Cord-Moulded Boot	Bag of 2	1.2m	Orange	6451 5 997-10B
TrueNet® Category 6 Patch Cord-Moulded Boot	Bag of 2	2.1m	Orange	6451 5 997-20B
TrueNet® Category 6 Patch Cord-Moulded Boot	Bag of 2	3.0m	Orange	6451 5 997-30B
TrueNet® Category 6 Patch Cord-Moulded Boot	Bag of 2	4.5m	Orange	6451 5 997-40B
TrueNet® Category 6 Patch Cord-Moulded Boot	Bag of 2	7.5m	Orange	6451 5 997-70B
TrueNet® Category 6 Patch Cord-Moulded Boot	Bag of 2	10.0m	Orange	6451 5 997-00B
TrueNet® Category 6 Patch Cord-Moulded Boot	Bag of 2	15.0m	Orange	6451 5 997-01B

RJ45 to RJ45 Shielded Patch Cords

For patching between two RJ45 outlets in a Category 6 network. F/UTP provides excellent protection from external noise sources.



RJ45 Shielded Patch Cords

Ordering Information

Description	Quantity	Length	Colour	Product No.
RJ45 Patch Cord Shielded	Bag of 2	1.2m	Blue	6451 5 839-10B
RJ45 Patch Cord Shielded	Bag of 2	2.1m	Blue	6451 5 839-20B
RJ45 Patch Cord Shielded	Bag of 2	3.0m	Blue	6451 5 839-30B
RJ45 Patch Cord Shielded	Bag of 2	4.5m	Blue	6451 5 839-40B
RJ45 Patch Cord Shielded	Bag of 2	7.5m	Blue	6451 5 839-70B
RJ45 Patch Cord Shielded	Bag of 2	15m	Blue	6451 5 839-01B

Category 6 Solutions

Patch Cords

RJ45 to RJ45 Crossover Patch Cords

For patching between 568A and 568B configurations in a Category 6 network. Each RJ45 connector has a latch protector.



RJ45 Crossover Patch Cord

Ordering Information

Description	Quantity	Length	Colour	Product No.
RJ45 Crossover Patch Cord	Bag of 2	1.2m	Red	6451 5 790-10
RJ45 Crossover Patch Cord	Bag of 2	2.1m	Red	6451 5 790-20
RJ45 Crossover Patch Cord	Bag of 2	3.0m	Red	6451 5 790-30
RJ45 Crossover Patch Cord	Bag of 2	4.5m	Red	6451 5 790-40
RJ45 Crossover Patch Cord	Bag of 2	7.5m	Red	6451 5 790-70

System Leads RJ45

These System Leads come supplied with an RJ45 connector on each end. The user has the option of cutting the system lead to make two system tails. The RJ45 is plugged or patched into patch panels or network switches and the other end is directly terminated (using the ADC KRONE termination tool) onto a module IDC.



System Lead RJ45

Ordering Information

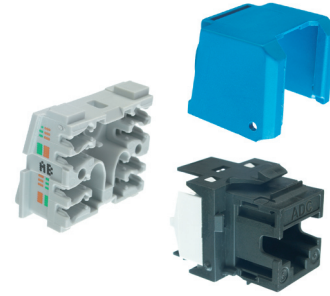
Description	Quantity	Length	Colour	Product No.
System Leads RJ45	Bag of 1	10m	Grey	6451 2 299-10B
System Leads RJ45	Bag of 1	20m	Grey	6451 2 299-20B
System Leads RJ45	Bag of 1	30m	Grey	6451 2 299-30B
System Leads RJ45	Bag of 1	40m	Grey	6451 2 299-40B
System Leads RJ45	Bag of 1	50m	Grey	6451 2 299-50B

Category 6 Solutions

Outlets

KM8 Tool free RJ-45 Outlet

The KM8 Tool free RJ-45 Jack uses the keystone design, the global standard ensuring compatibility with the diverse range of faceplate systems. The cable manager holds cable pairs in place up to the termination point. This prevents untwisting and buckling of connectors thereby guaranteeing performance for every installation.



KM8 RJ45 Outlet

Ordering Information

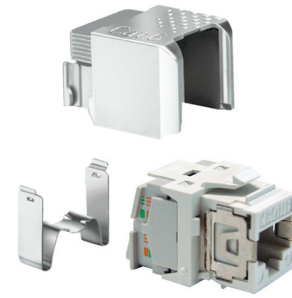
Description	Colour	Product No.
KM8 Cat 6 RJ45 UTP Cable Managed 568A/B Jack	White	6830 1 800-01
KM8 Cat 6 RJ45 UTP Cable Managed 568A/B Jack	Ivory	6830 1 800-02
KM8 Cat 6 RJ45 UTP Cable Managed 568A/B Jack	Grey	6830 1 800-03
KM8 Cat 6 RJ45 UTP Cable Managed 568A/B Jack	Black	6830 1 800-04
KM8 Cat 6 RJ45 UTP Cable Managed 568A/B Jack	Red	6830 1 800-05
KM8 Cat 6 RJ45 UTP Cable Managed 568A/B Jack	Blue	6830 1 800-06
KM8 Cat 6 RJ45 UTP Cable Managed 568A/B Jack	Green	6830 1 800-07
KM8 Cat 6 RJ45 UTP Cable Managed 568A/B Jack	Yellow	6830 1 800-08
KM8 Cat 6 RJ45 UTP Cable Managed 568A/B Jack	Purple	6830 1 800-09
KM8 Cat 6 RJ45 UTP Cable Managed 568A/B Jack	Orange	6830 1 800-10

Category 6 Solutions

Outlets

KM8 RJ45 Outlet Shielded

These Keystone outlets, are used to terminate shielded cable. Metal barrier provides excellent protection from external noise sources.



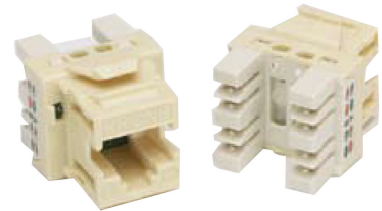
KM8 RJ45 Outlet

Ordering Information

Description	Quantity	Colour	Product No.
KM8 RJ45 Outlet Shielded	Bag of 1	White	6830 1 810-01
KM8 RJ45 Outlet Shielded	Bag of 8	White	6830 2 711-01

Category 6 KM8 Modular Punchdown Jacks

The KM8 Punchdown RJ-45 Jack uses the keystone design, the global standard ensuring compatibility with the diverse range of faceplate systems. Accepts either a ADC KRONE or 110 insertion tool for wire termination for punchdown jack.



Category 6 KM8 Modular Punchdown Jacks

Ordering Information

Description	Quantity	Colour	Product No.
KM8 RJ45 Modular punchdown jack	Bag of 1	White	6830 1 830-01
KM8 RJ45 Modular punchdown jack	Bag of 1	Ivory	6830 1 830-02
KM8 RJ45 Modular punchdown jack	Bag of 1	Grey	6830 1 830-03
KM8 RJ45 Modular punchdown jack	Bag of 1	Black	6830 1 830-04
KM8 RJ45 Modular punchdown jack	Bag of 1	Red	6830 1 830-05
KM8 RJ45 Modular punchdown jack	Bag of 1	Blue	6830 1 830-06
KM8 RJ45 Modular punchdown jack	Bag of 1	Green	6830 1 830-07
KM8 RJ45 Modular punchdown jack	Bag of 1	Yellow	6830 1 830-08
KM8 RJ45 Modular punchdown jack	Bag of 1	Purple	6830 1 830-09
KM8 RJ45 Modular punchdown jack	Bag of 1	Orange	6830 1 830-10

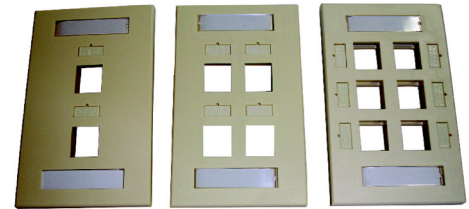
Category 6 Solutions

Faceplates

Faceplates USA Style - 2-port / 4 port / 6 port

Features

- Label holders for application identification and numbering
- Accept any combination of modular jacks
- Size: 114.5 mm x 70 mm x 6.35 mm
- UL 1863 listed



Faceplates USA Style - 2-port / 4 port / 6 port

Ordering Information

Description	Colour	Product No.
2 port Faceplate (USA Style)	Ivory	6644 1 152-02
4 port Faceplate (USA Style)	Ivory	6644 1 154-02
6 port Faceplate (USA Style)	Ivory	6644 1 156-02
Blank Modular inserts	Ivory	6645 1 160-02